

elia marinucci

born 1981 in switzerland

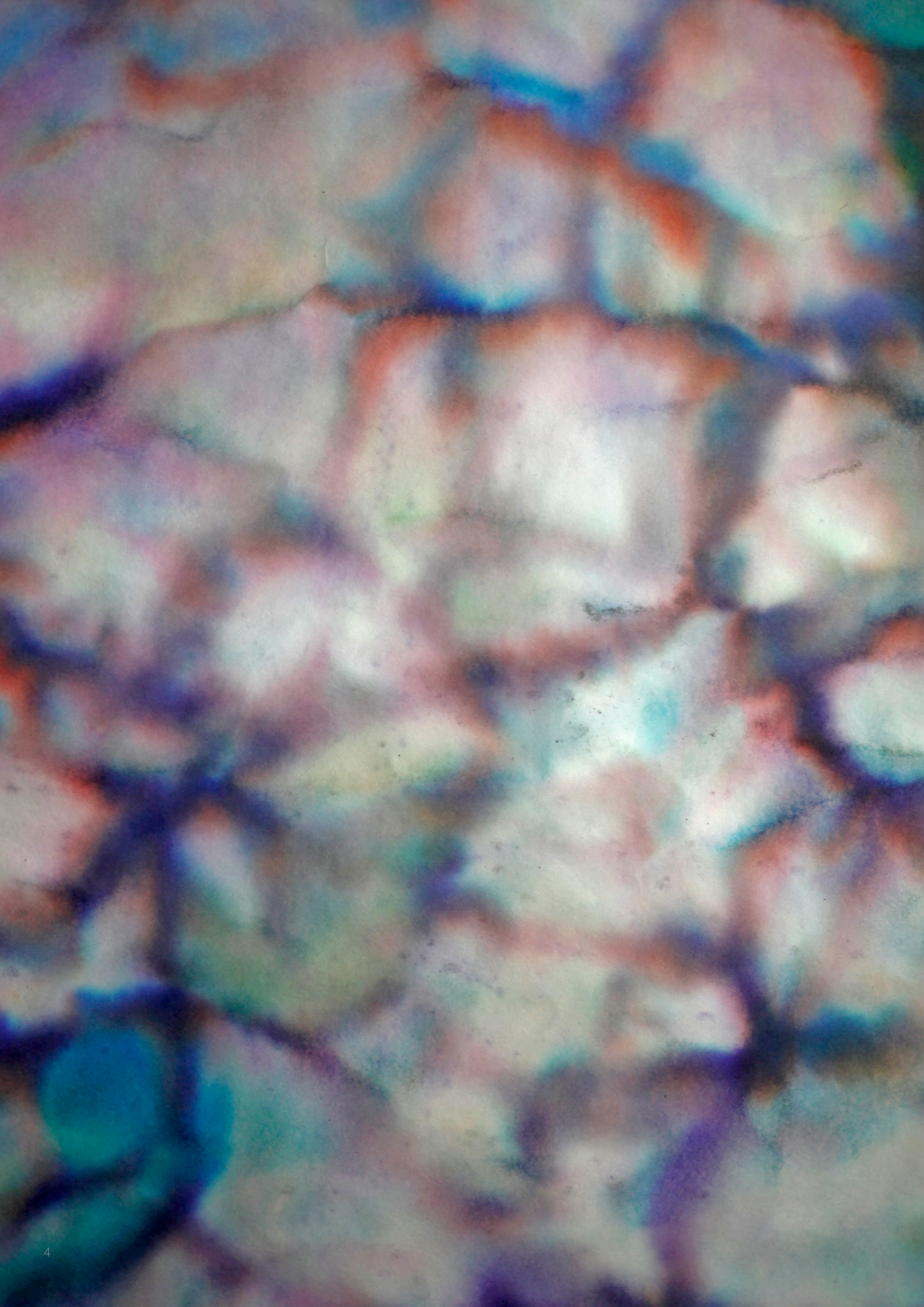
lives and works in zürich

<http://w3em.ch/>

portfolio 2017

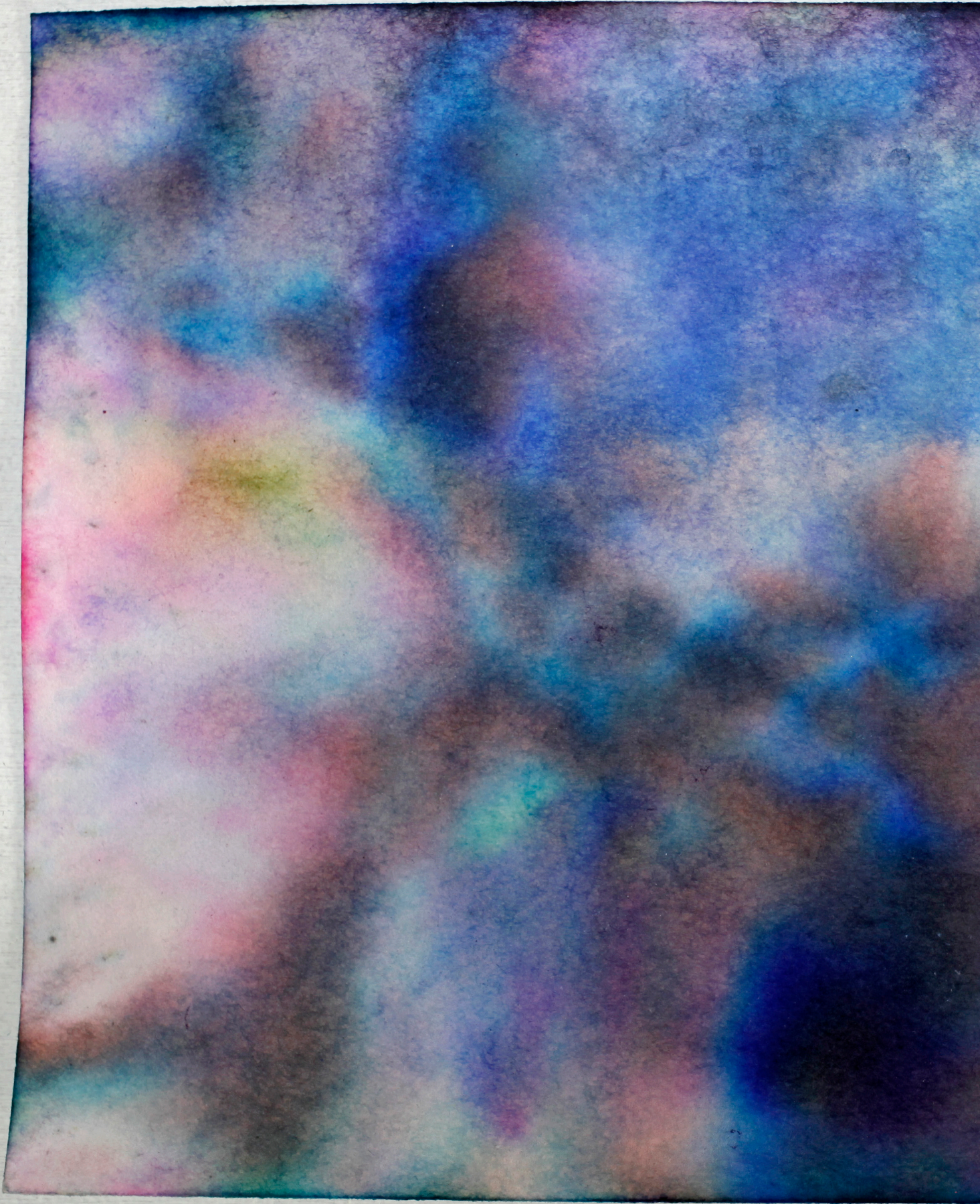
selected works

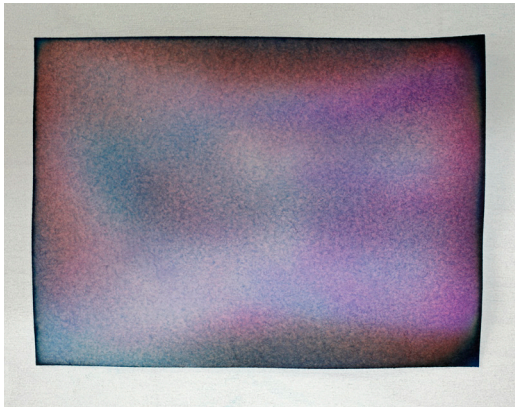
index



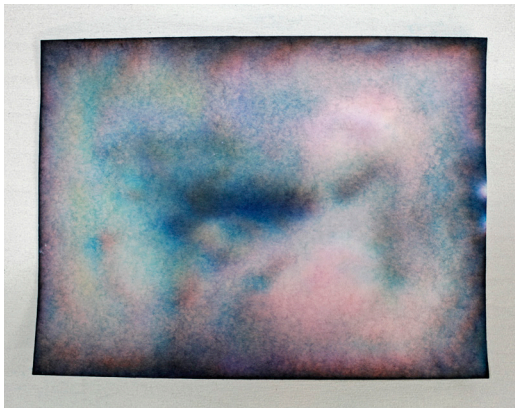


bad tuch / a / chromatography / black ink on paper / 120 x 80 cm / 2017

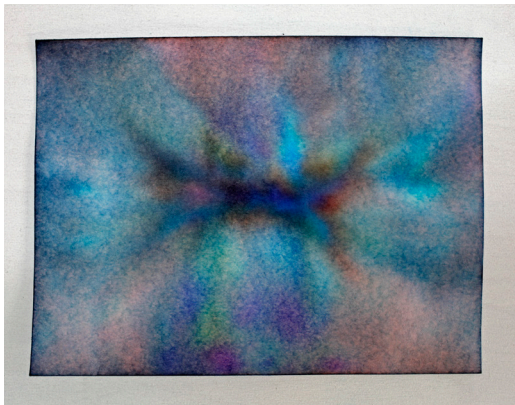




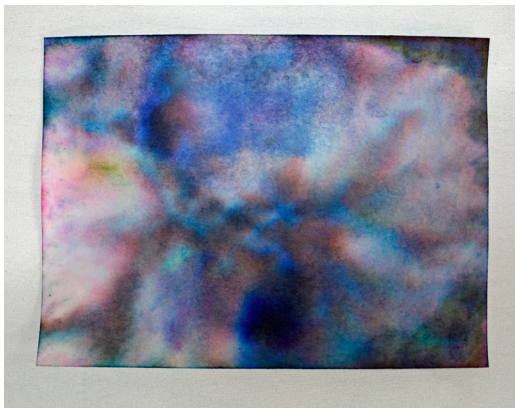
b



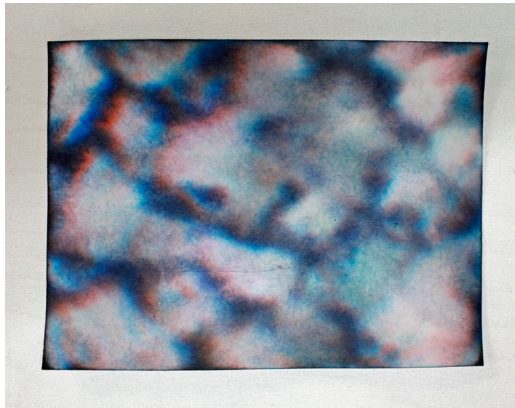
c



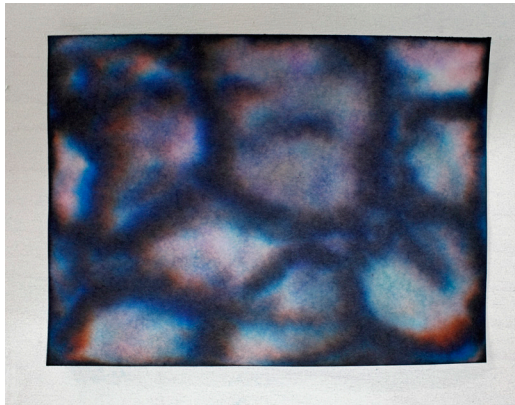
d



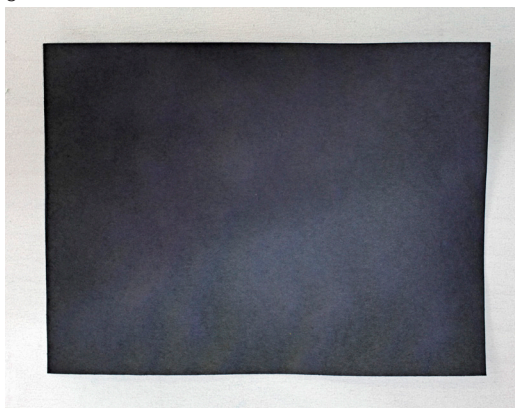
e



f

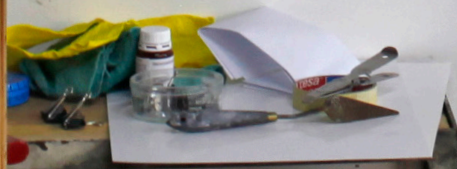
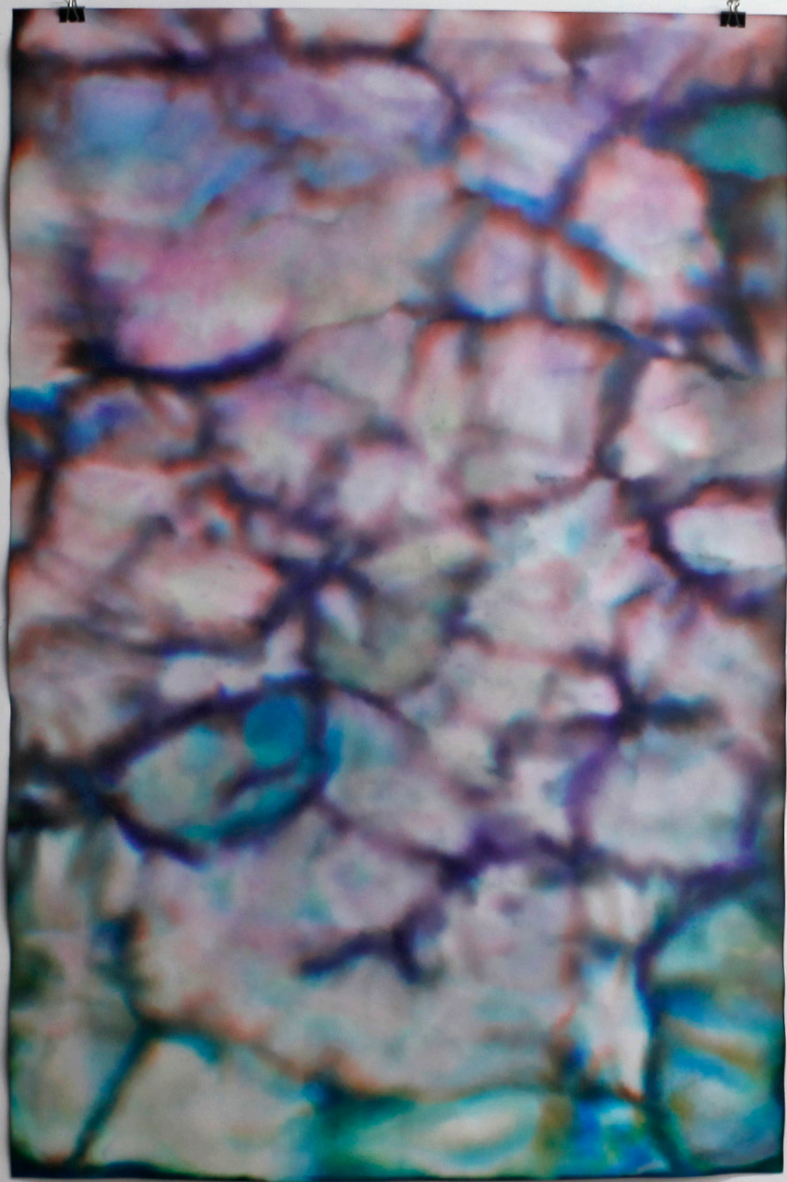


g



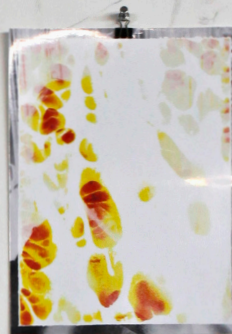
h

bad tuch / b—h / chromatography / black ink on paper / 15 x 20 cm each / 2017





bad tuch / chromatography / black ink on paper / 2017





mis record ja / a—c / dissolved photograph / 27 x 20 cm each / 2017





mis record ja / d—f / photographic emulsion on paper / 39.5 x 30 cm each / 2017





mis record ja / g-i / oil and ink on wood / 39.5 x 30 cm each / 2017





a



b



c



d



e



f



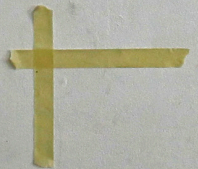
g



h



i



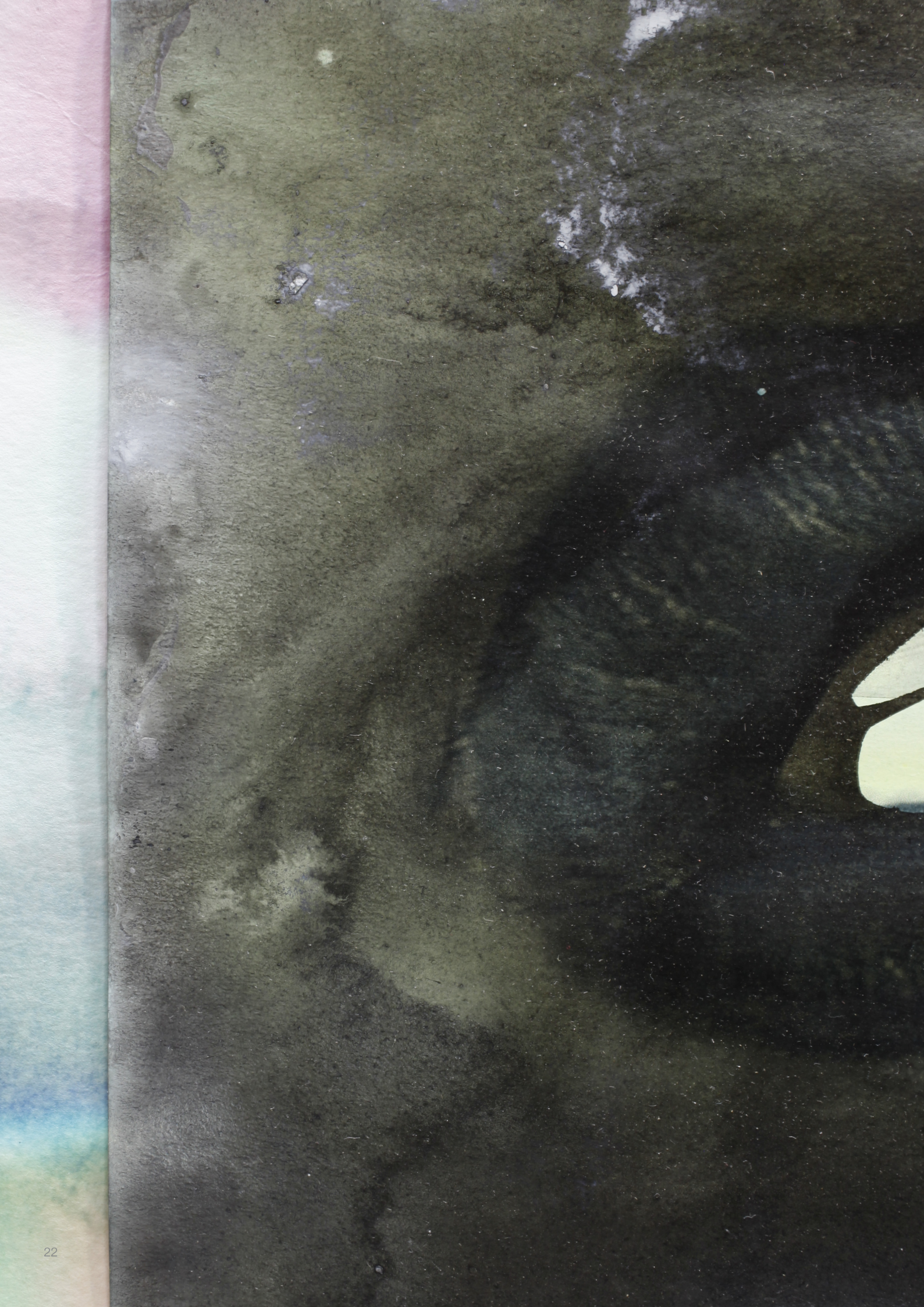




de do / mixed media on wood / 40 x 29.5 cm / 2017

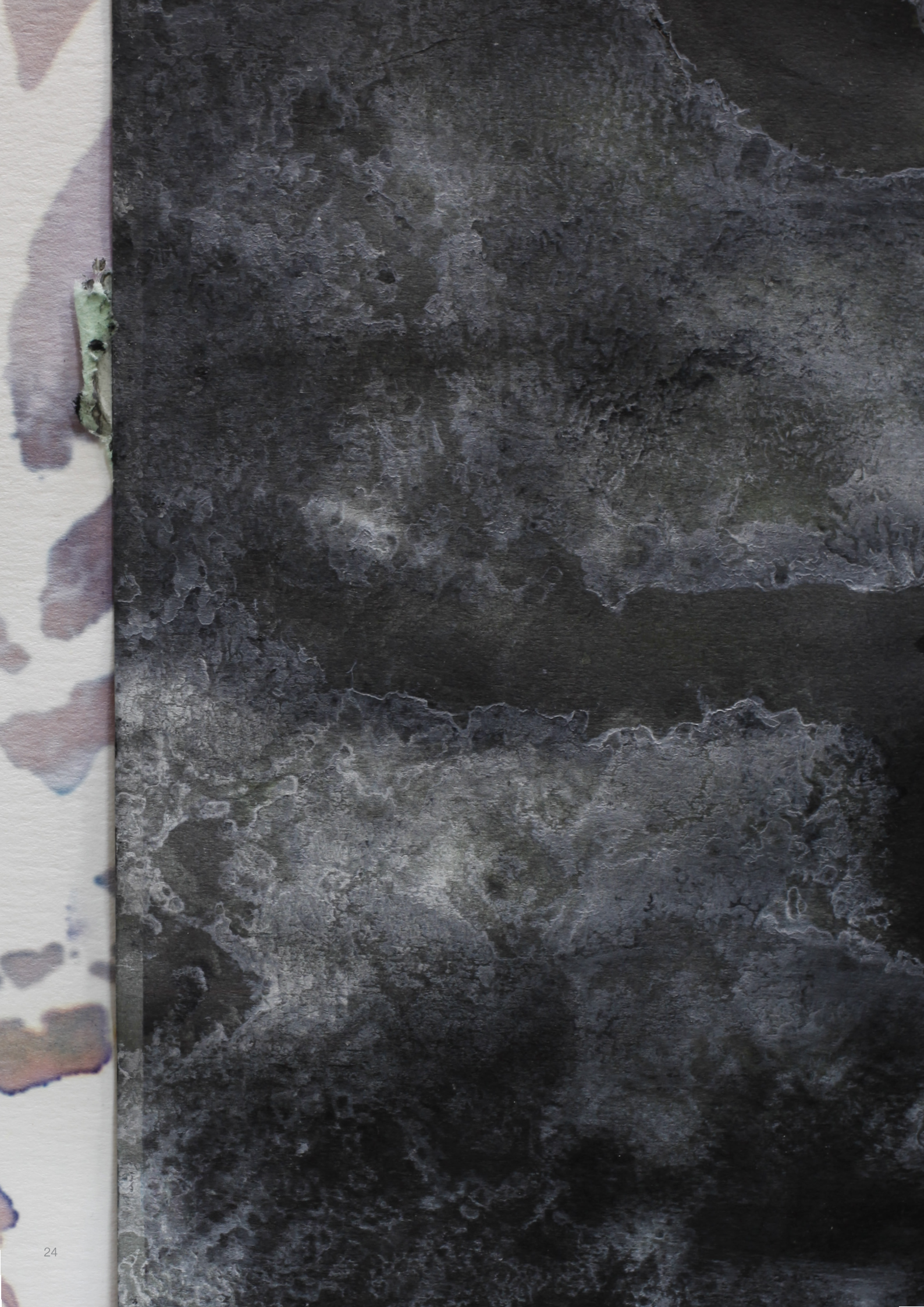


el no / mixed media on wood / 40 x 29.5 cm / 2017





re cmp schufle / inkjet print on ink on paper / 46.5 x 34.5 cm / 2017





re cmp dzy / inkjet print on ink on paper / 40 x 30 cm / 2017





se di dimenti / soaked paper stack / coffee and ink on paper / 47.5 x 32.5 cm / 2017



se di bar / a—c / coffee and ink on cardboard / 34.5 x 50 cm each / 2017



a



b



c



se di mo vi / a—I / soaked paper stack unfolded / ink on paper / 17.5 x 24.5 cm each / 2017



a



b



c



d



e



f



g



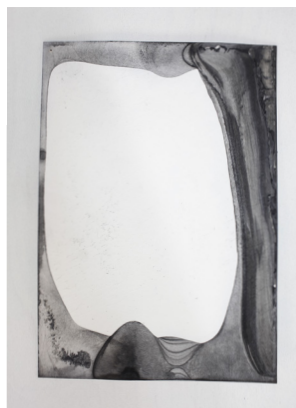
h



i



j



k



l

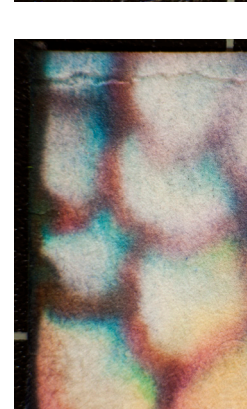
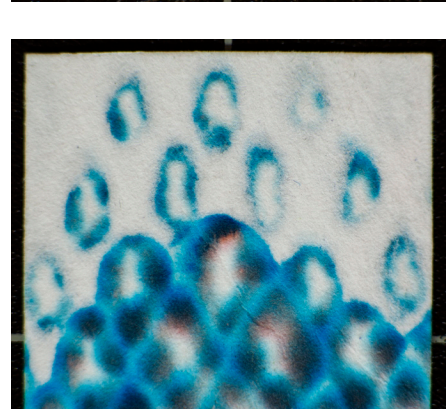
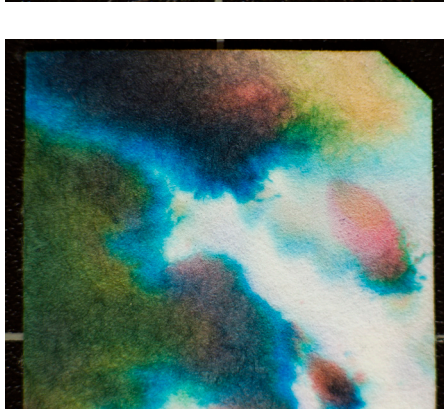
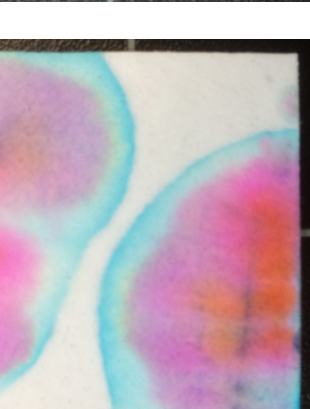
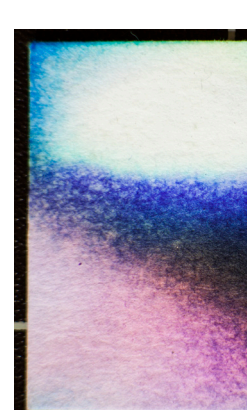
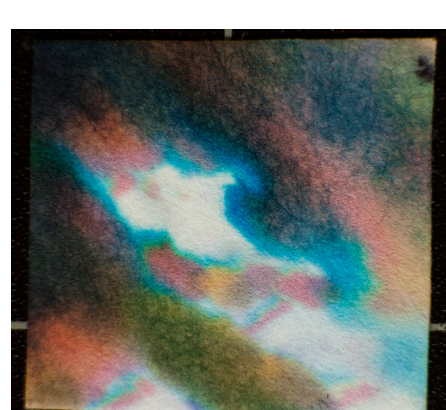
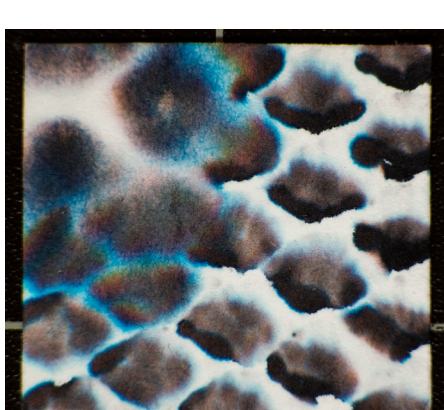
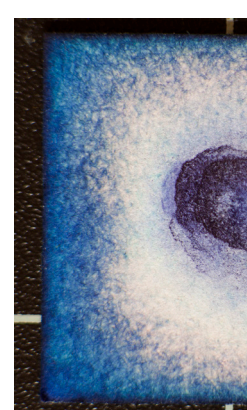
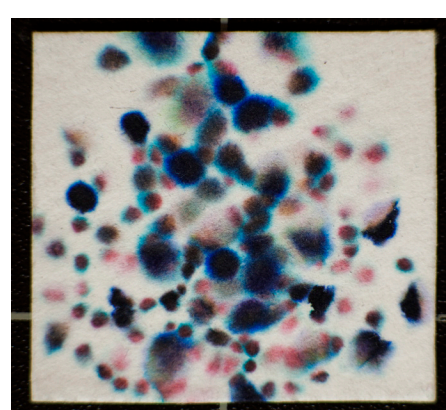
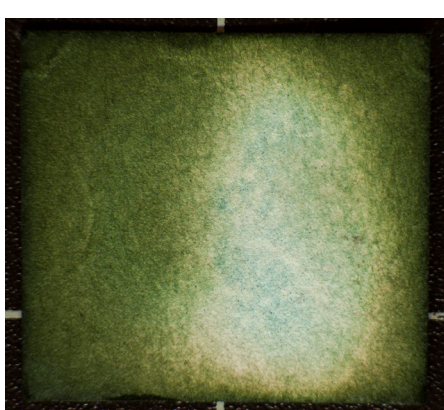
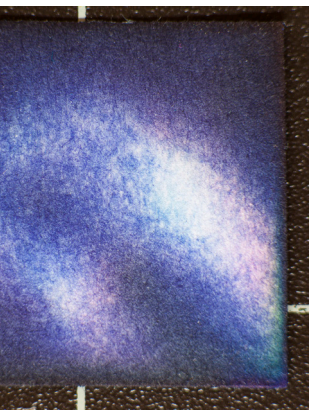
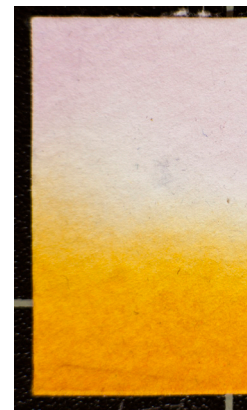
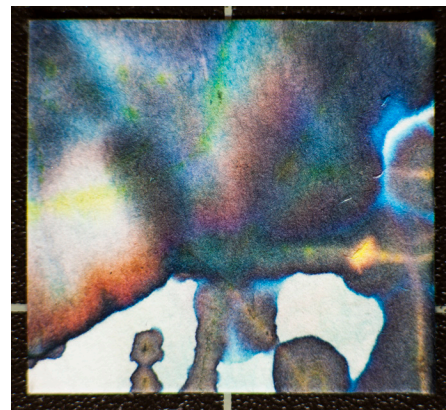
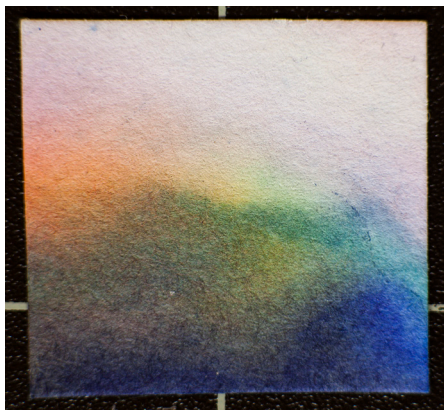
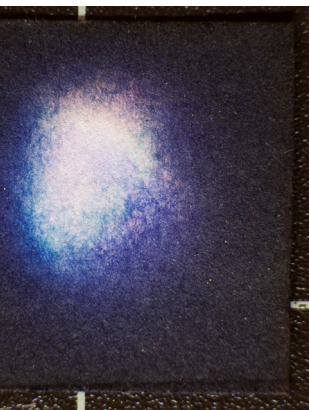




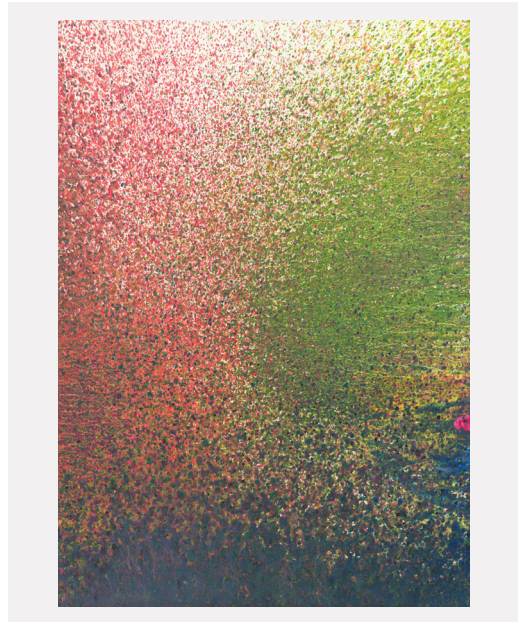
chli ned weg / dissolved photograph with frame / 104 x 104 cm / 2017



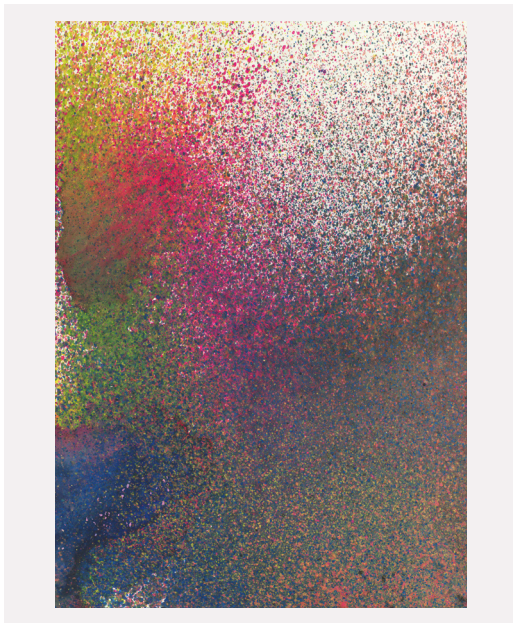
ru ffs / approx. 60 pcs. / boxed collection of chromatography tests / black ink on paper / 3.4 x 3.6 cm each / 2017



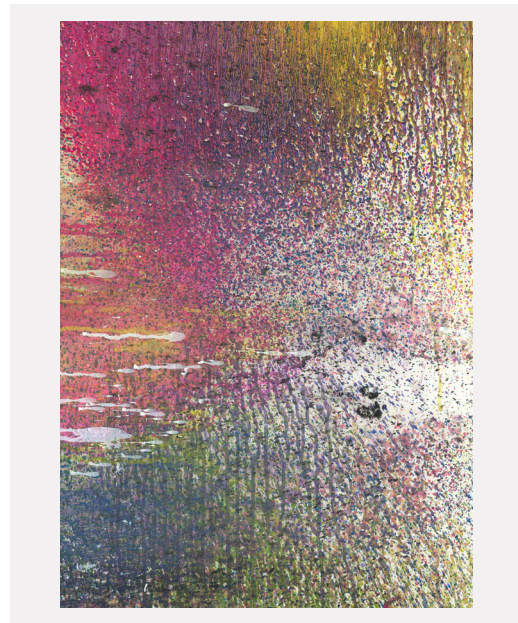
* <http://ruffs.smvi.co/>



a

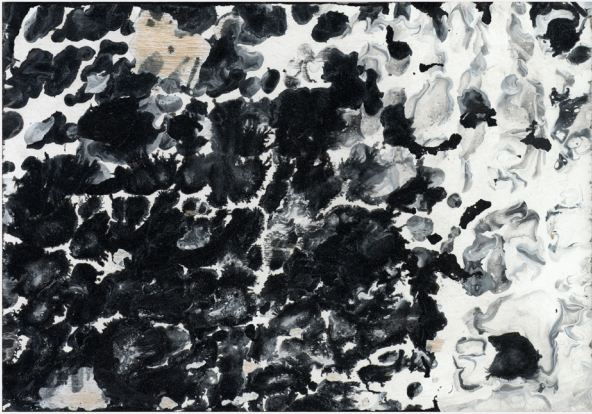


b

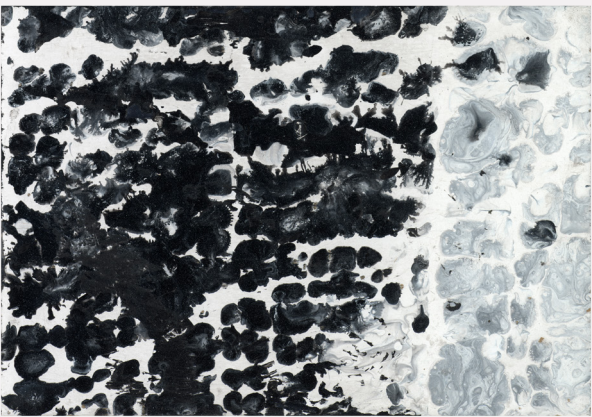


c

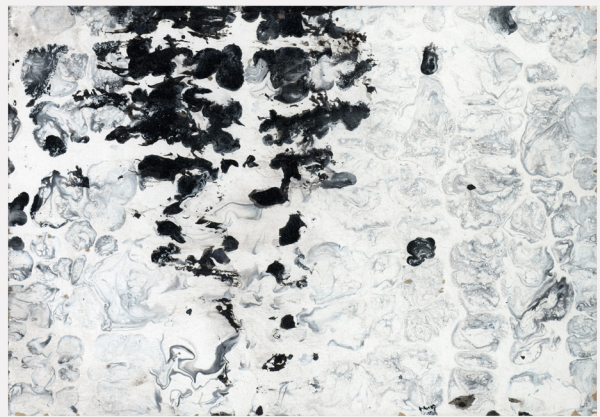
ab pro farb / goache on wood / 60 x 42 cm each / 2014



a



b



c

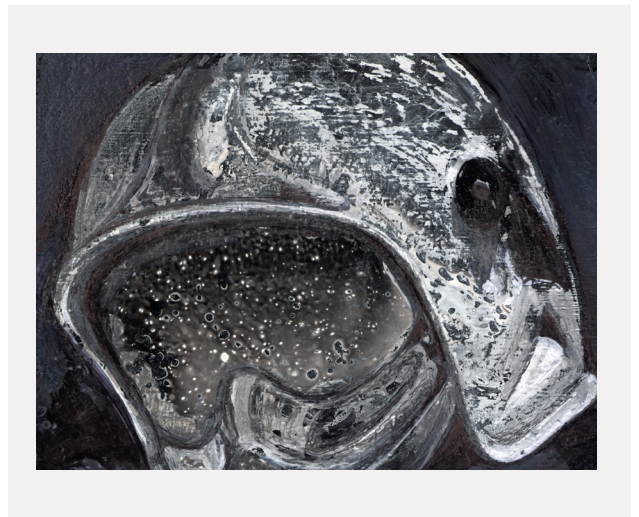
geh stöbr / black and white synthetic resin on wood / 21 x 15 cm each / 2014



a

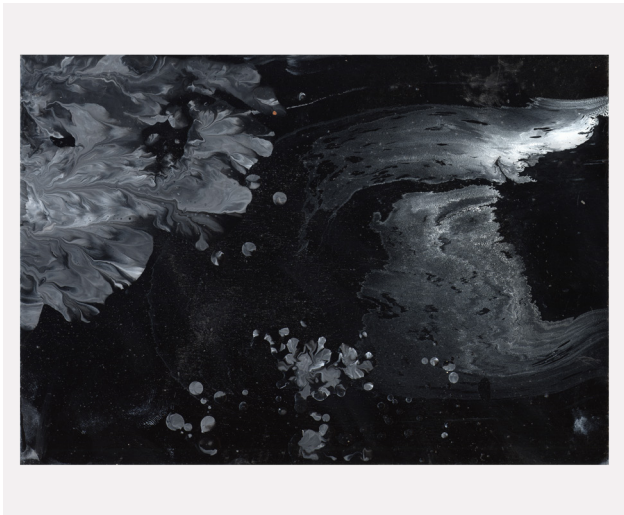


b



c

dr öbr / ink and synthetic resin on wood / 21 x 15 cm each / 2014



a

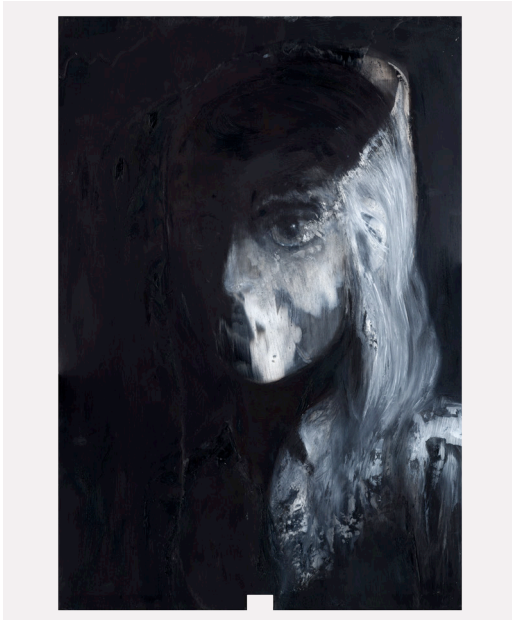


b

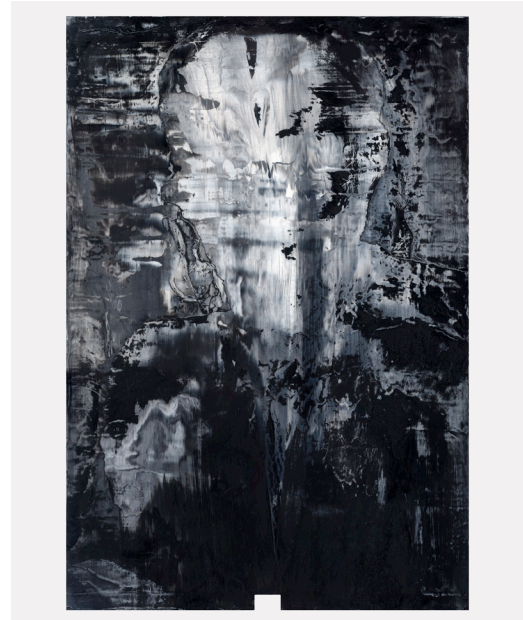


c

nord / black and white synthetic resin on wood / 21 x 15 cm each / 2014



1a



1b



2a



2b

1 halb schwo & bro/ oil and synthetic resin on metal / 47 x 31 cm each / 2014

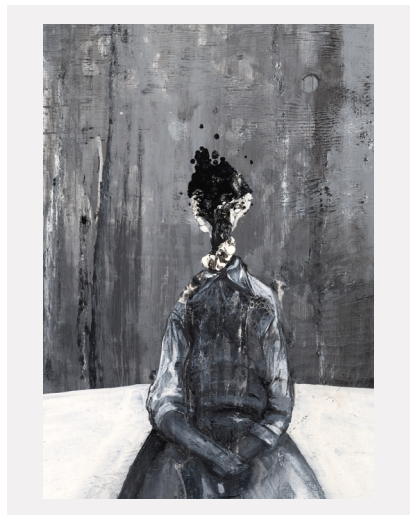
2 schnälle pfoschte si & er / acryl and synthetic resin on metal / 47 x 31 cm each / 2014



1a



1b



2a



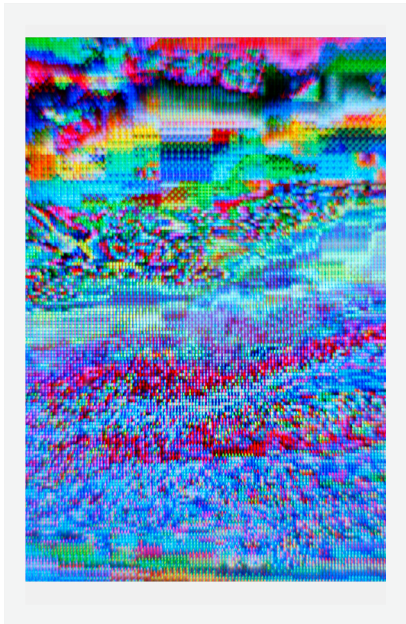
2b



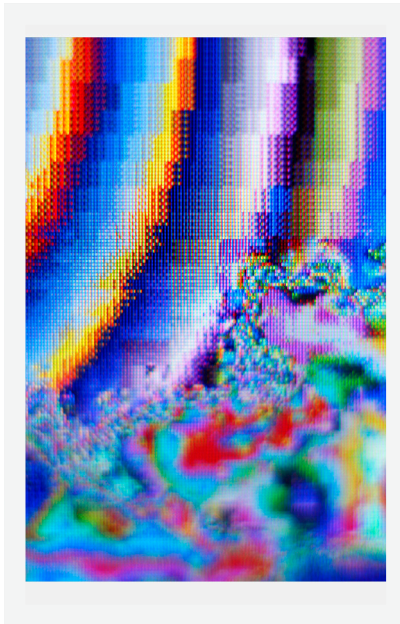
2c

1 **immer no** / synthetic resin on wood / 60 x 42 cm each / 2014

2 **hetti wetti** / synthetic resin on wood / a) 62 x 40 cm / b & c) 58 x 49 cm / 2014



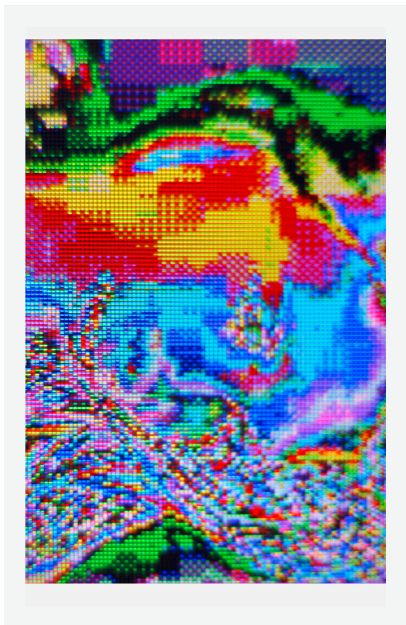
a



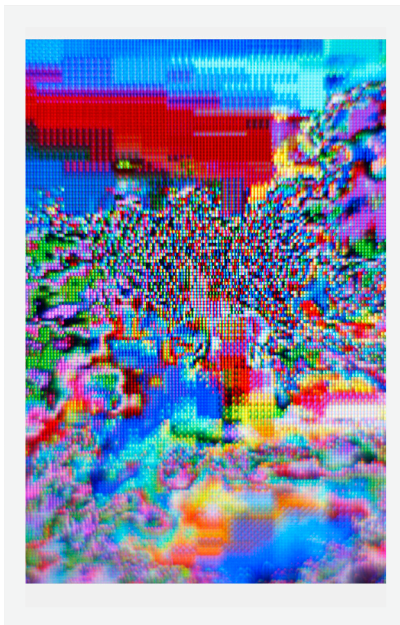
b



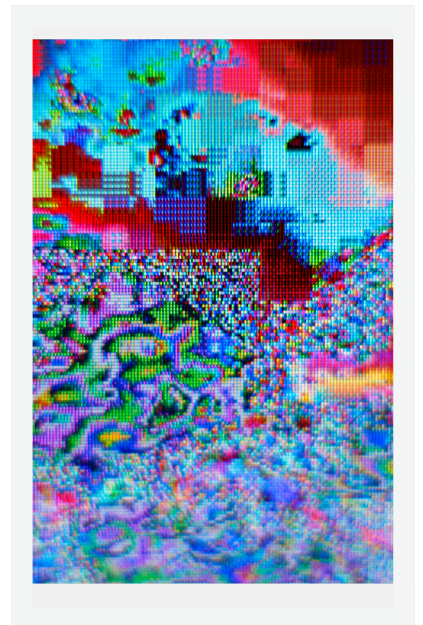
c



d



e



f

fertig ez / fine art print on foam board / 40 x 30 cm each / 2014



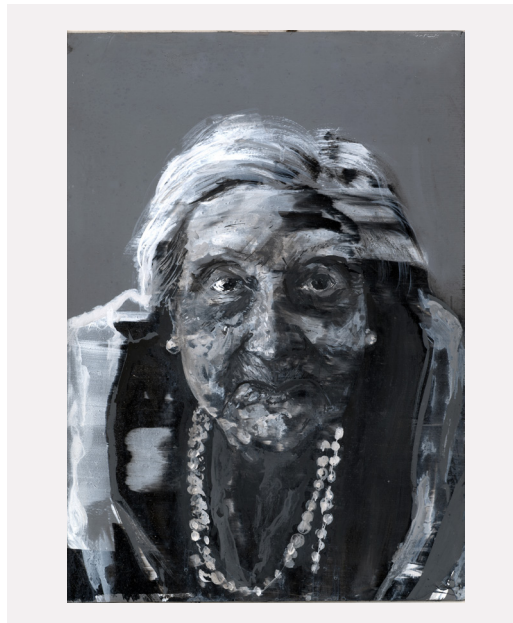
1



2



3



4

1 **los got** / oil and synthetic resin on glass / 60 x 80 cm / 2015

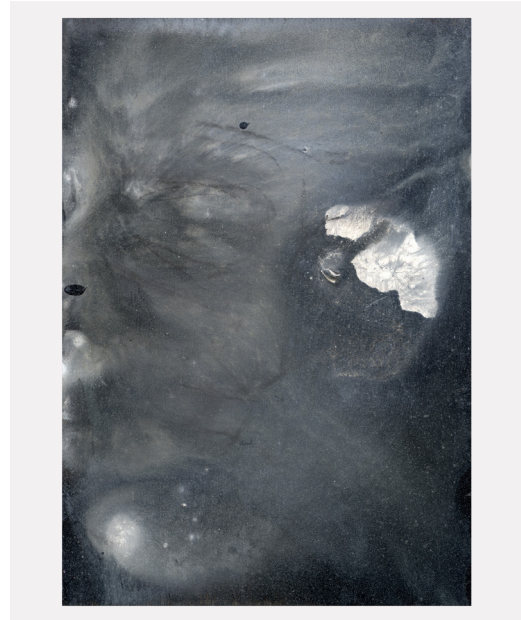
2 **selbst por tre** / synthetic resin and water color on wood / 60 x 45 cm ex. frame / 2015

3 **strich si no** / ink and synthetic resin on wood / 30 x 50 cm / 2015

4 **da da a** / synthetic resin on wood / 60 x 42 cm / 2015



1a



1b



2



3

- 1 **je her** / ink and synthetic resin on wood / 21 x 15 cm each / 2015
2 **arme mond ond** / synthetic resin on wood / 21 x 15 cm / 2015
3 **en wahre hohle** / oil and synthetic resin on wood / 21 x 15 cm / 2015



1a



1b



2a



2b

1 **itach** / black and white synthetic resin on metal / 47 x 31 cm each / 2015
2 **flug** / black and and synthetic resin on wood / 21 x 15 cm each / 2015



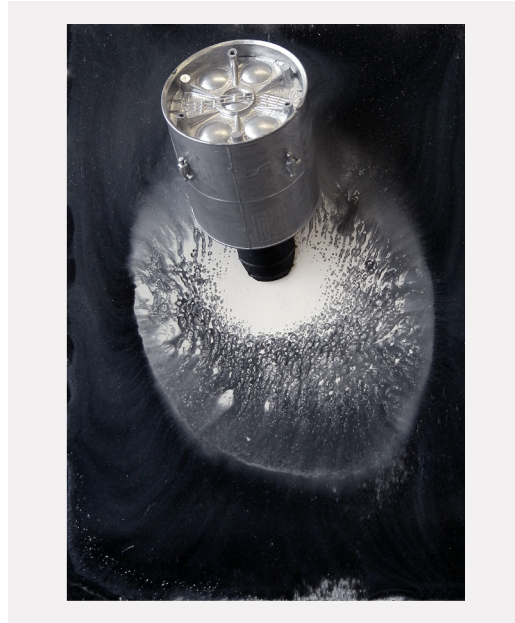
a



b



c



d

strand ded lose / synthetic resin on wood / 21 x 15 cm each / 2015



1a



1b



2a



2b

1 **denn z'leer isch** / synthetic resin on wood / 60 x 42 cm each / 2015

2 **go odri lum** / synthetic resin on wood / a) 40 x 30 cm / b) 30 x 24 cm / 2015



a



b



c



d

para tod er / synthetic resin on wood / 21 x 15 cm each / 2015



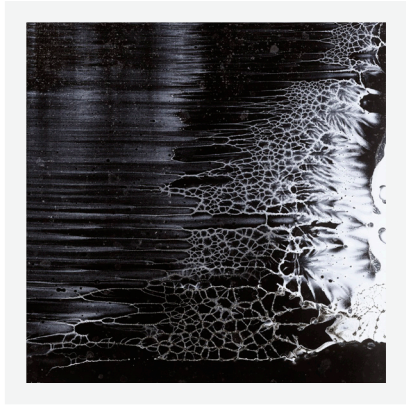
a



b



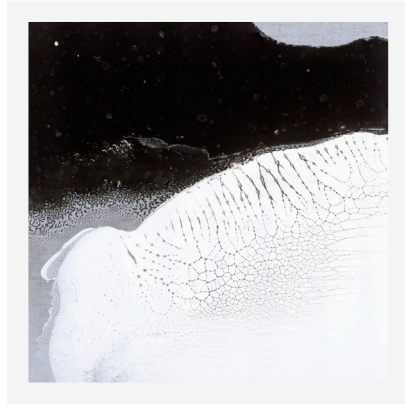
c



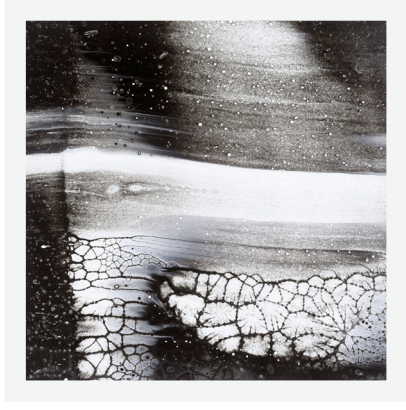
d



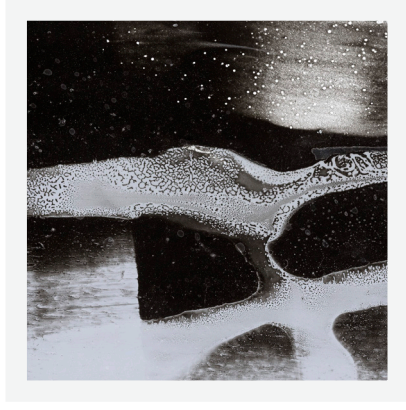
e



f



g

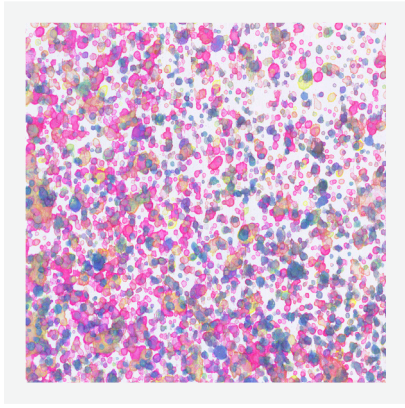


h

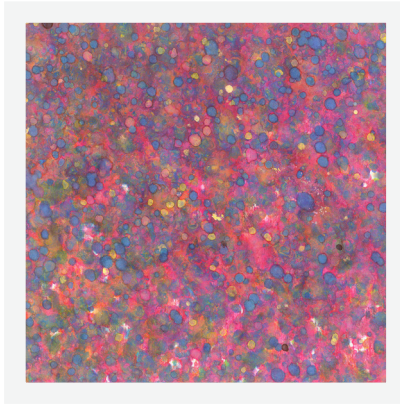


i

chli ned gheit / lambda print on alu dibond with brace backing / 150 x 150 cm each / 2015



a



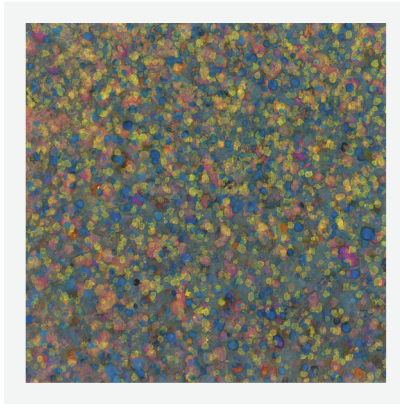
b



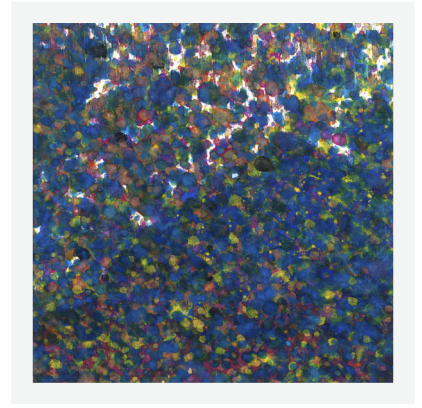
c



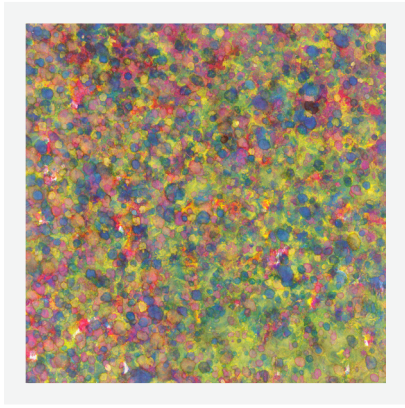
d



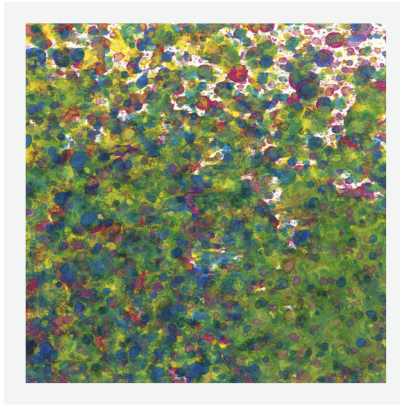
e



f



g



h



i

ab pro all / giclée print on alu dibond with brace backing / 150 x 150 cm each / 2015



tin ten / chromatography study of black inks / ink on paper / 30 x 5 cm each / 2016



a



b



c



d



e



f



g

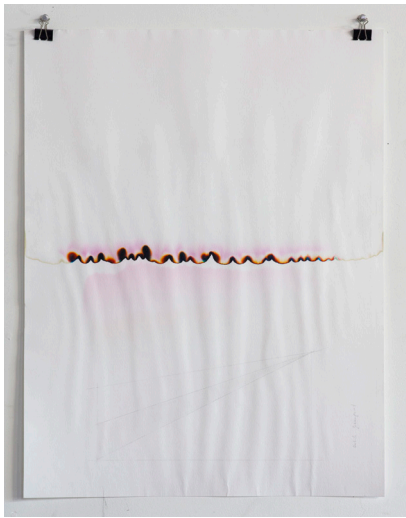


h



i

bla chrom 1 / chromatography / ink on paper / 65 x 50 cm each / 2016



a



b



c



d



e



f



g



h



i

bla chrom 2 / chromatography / ink on paper / 65 x 50 cm each / 2016



a



b



d



c



e



f

bla chrom 3 / chromatography / ink on paper / 65 x 50 cm each / 2016



1



2

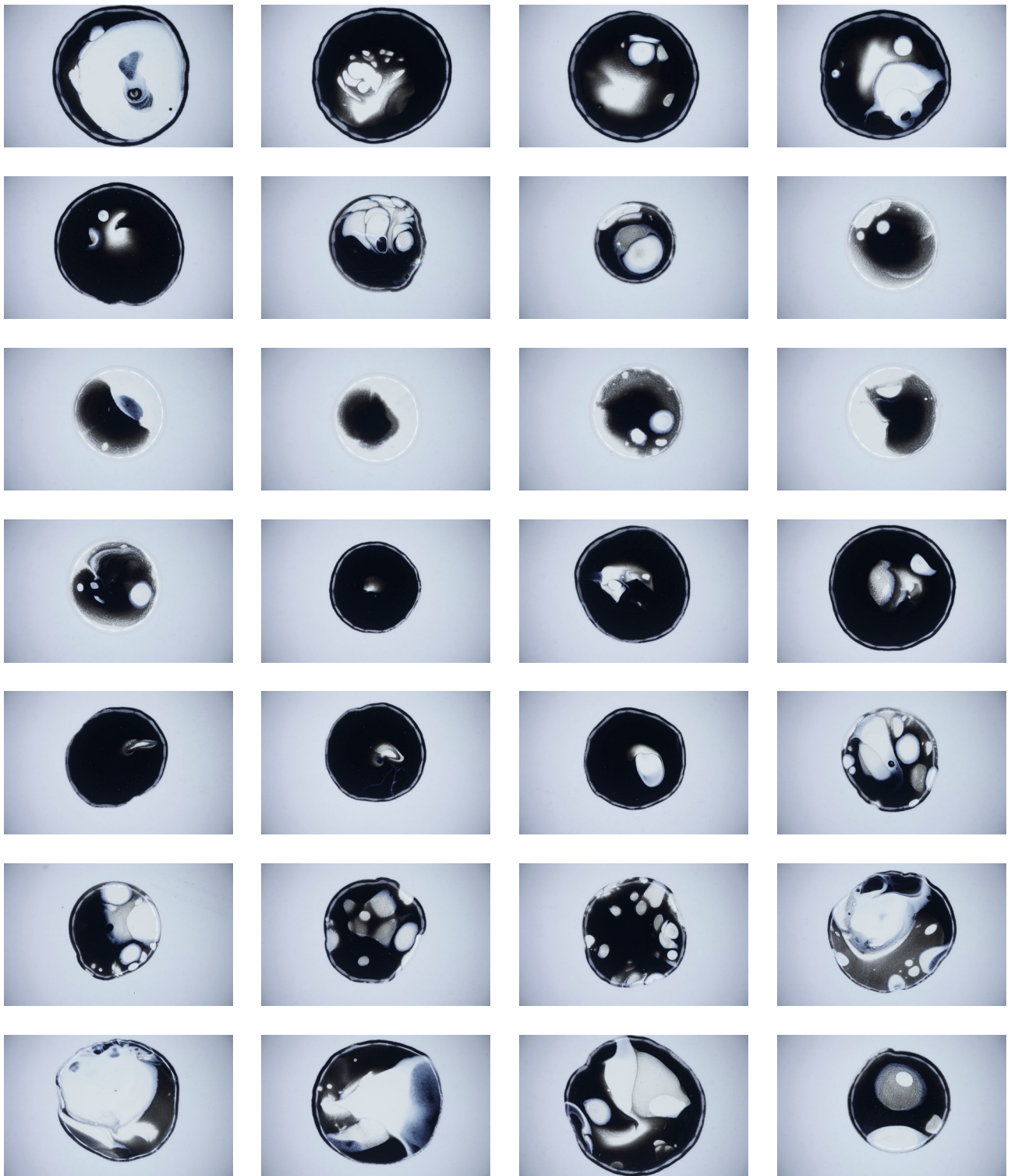


3a

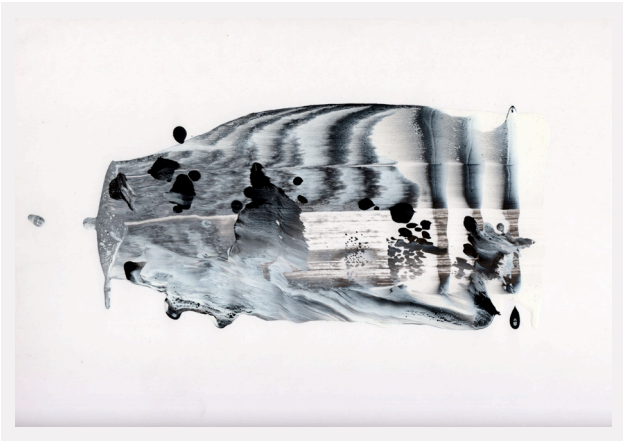


3b

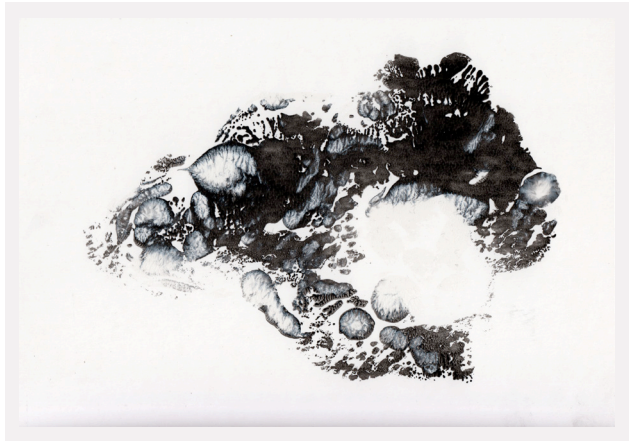
- 1 **bi ba** / ink on cardboard / 100 x 70 cm / 2016
- 2 **el ja** / synthetic resin and wax on wood / 129 x 90 cm / 2016
- 3 **sin dr do** / synthetic resin on wood / 63 x 41 cm each / 2016



dr ops / photograph / collection of 300+ drops/ lambda print 7,5 x 5 cm each / 2016



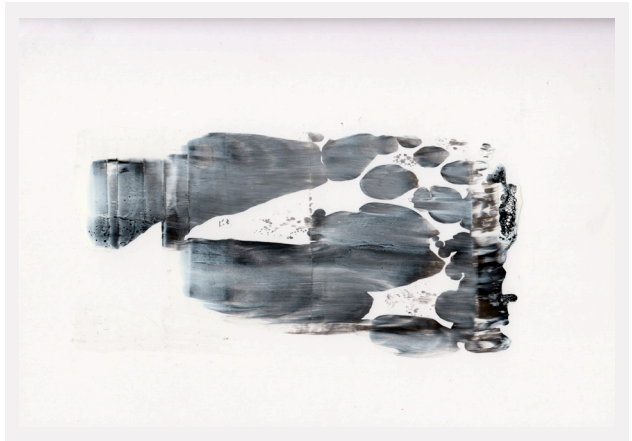
a



b

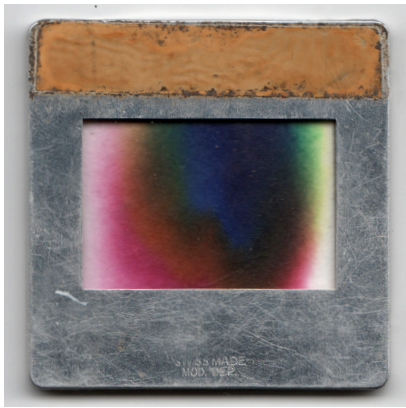


c



d

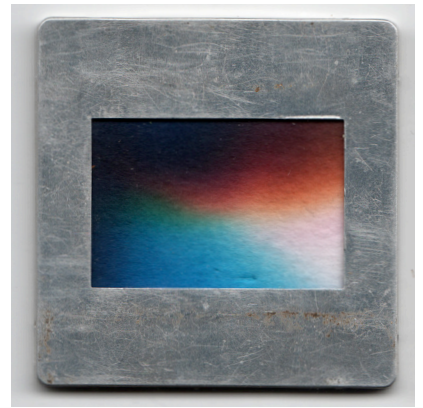
auto schwed / synthetic resin on paper / 24,5 x 17,5 cm each / 2016



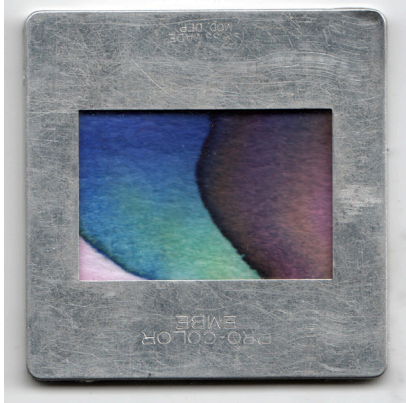
a



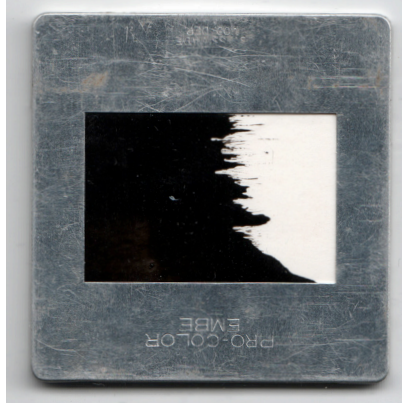
b



c



c



e



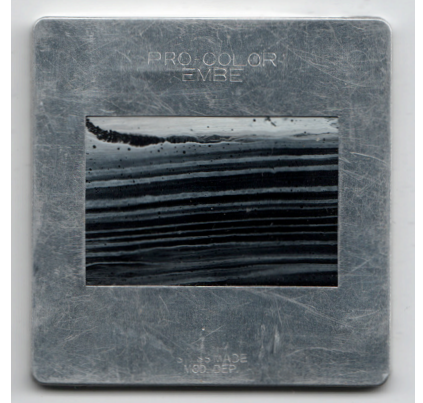
f



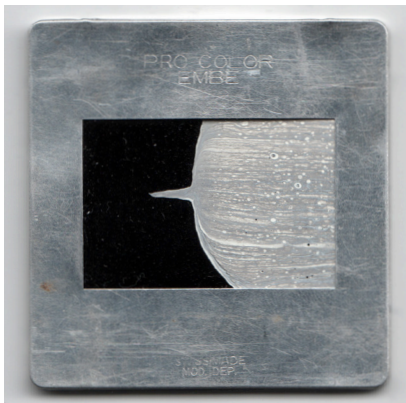
g



h



i



j

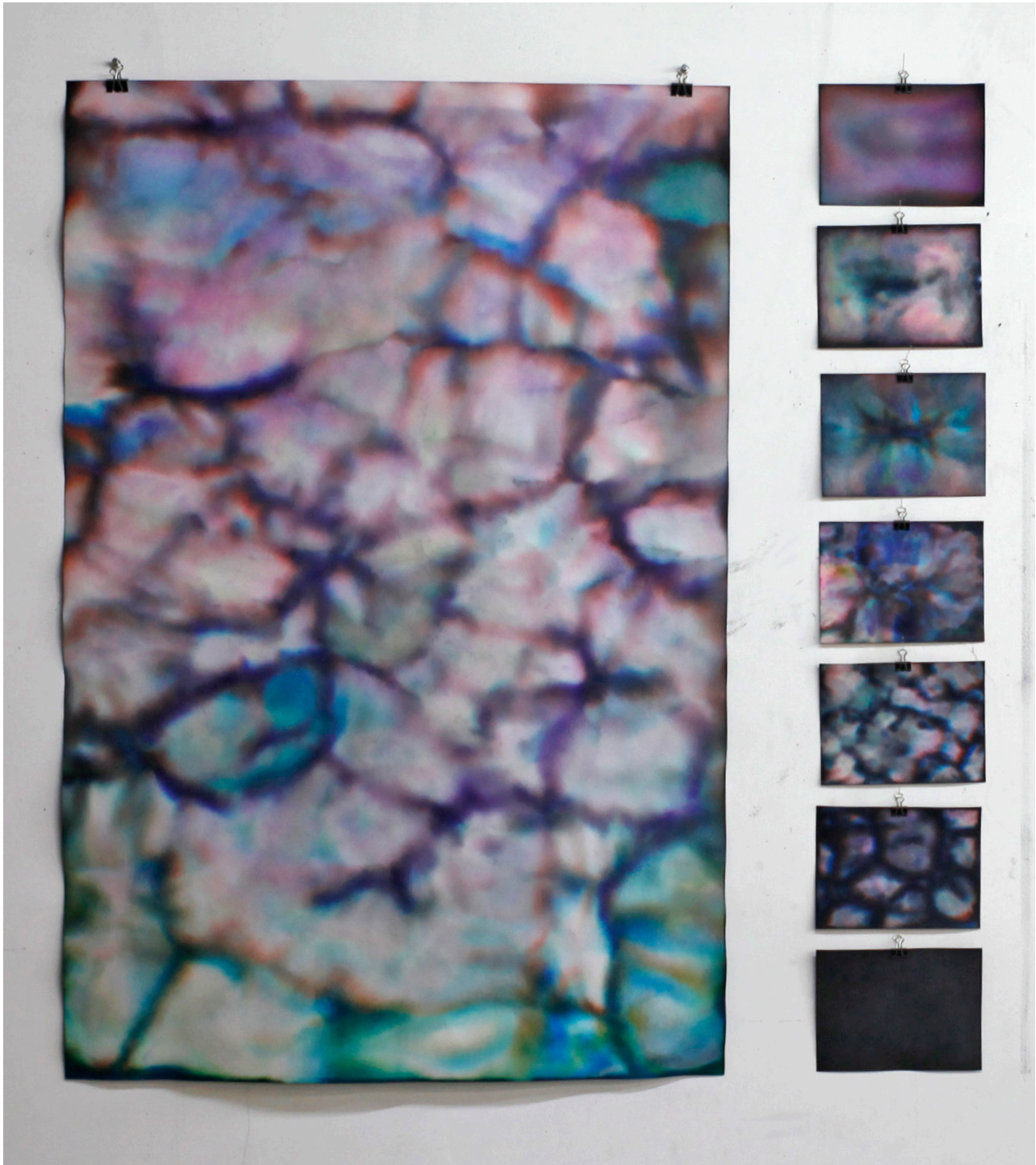


k



l

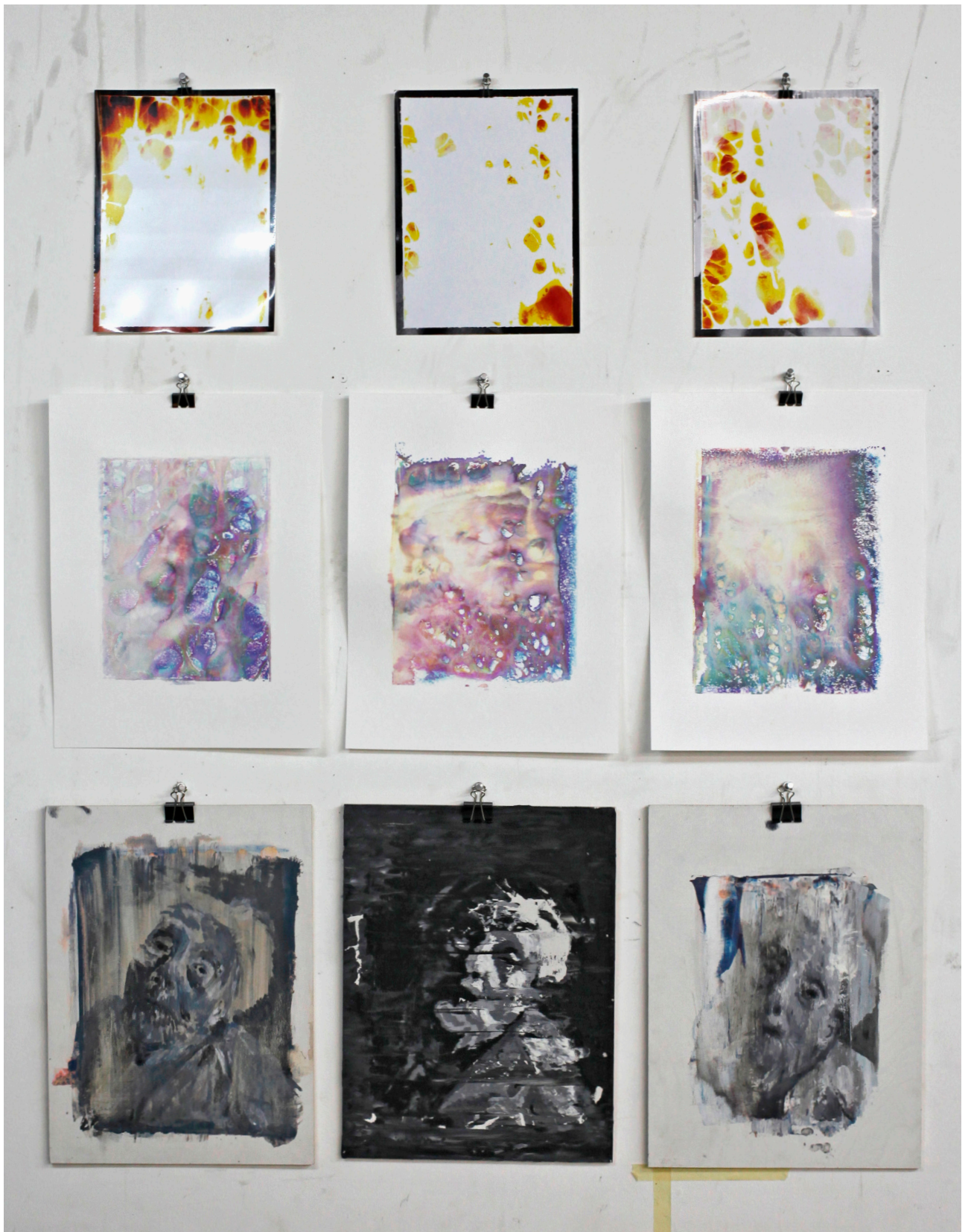
di as / dia with paper insert / 5 x 5 cm each / 2016



a

b-h

bad tuch / chromatography / black ink on paper / a 120 x 80 cm / b-h 15 x 20 cm each / 2017



mis record ja / mixed media / a—c 27 x 20 cm each / d—i 39.5 x 30 cm each / 2017



1



2



3



4

- 1 **de do** / mixed media on wood / 40 x 29.5 cm / 2017
2 **el no** / mixed media on wood / 40 x 29.5 cm / 2017
3 **re cmp schufle** / inkjet print on ink on paper / 46.5 x 34.5 cm / 2017
4 **re cmp dzy** / inkjet print on ink on paper / 40 x 30 cm / 2017



1



2a



2b



2c

1 **se di dimenti** / soaked paper stack / coffee and ink on paper / 47.5 x 32.5 cm / 2017
2 **se di bar** / coffee and ink on cardboard / 34.5 x 50 cm each / 2017



a



b



c



d



e



f



g



h



i



j

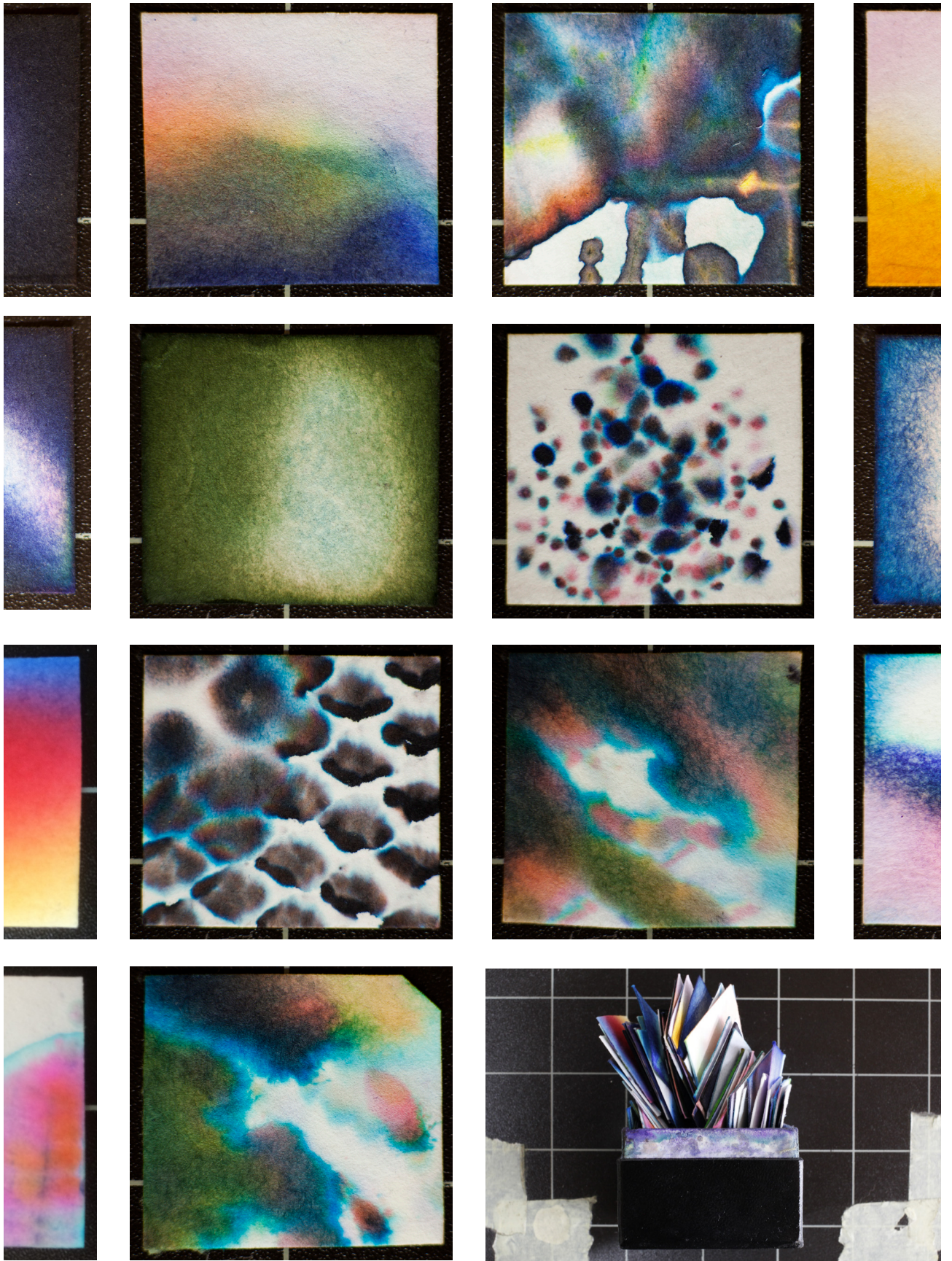


k



l

se di mo vi / soaked paper stack unfolded / ink on paper / 17.5 x 24.5 cm each / 2017



ru fs / approx. 60 pcs. / boxed collection of chromatography tests / black ink on paper / 3.4 x 3.6 cm each / 2017



1

1 **chli ned weg** / dissolved photograph with frame / 104 x 104 cm / 2017

2
3
4